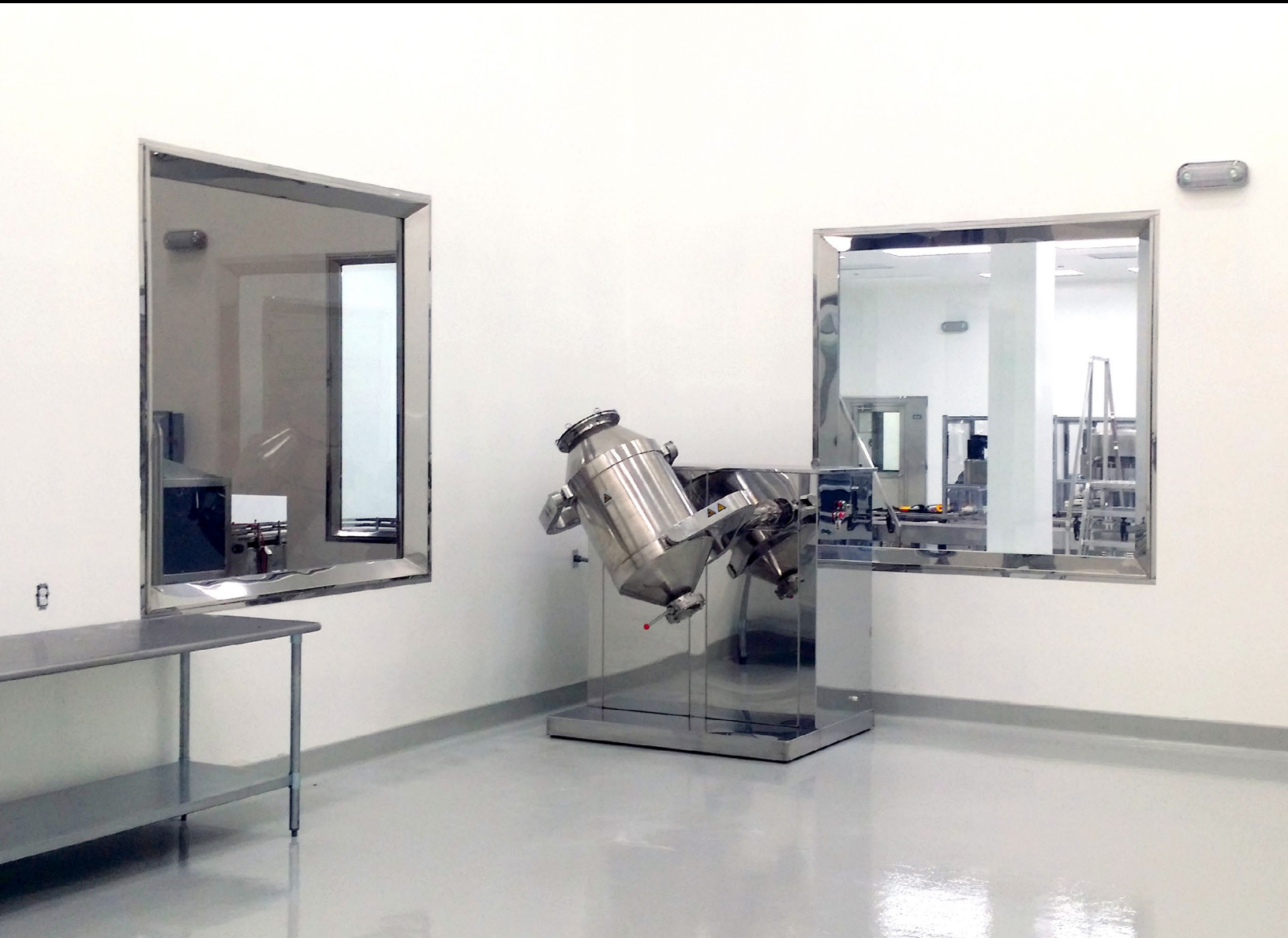


Sanitile[®]

High Performance Wall Coatings & Systems



Designed to perform – while still providing a striking image – there is a Sanitile system for nearly every service.

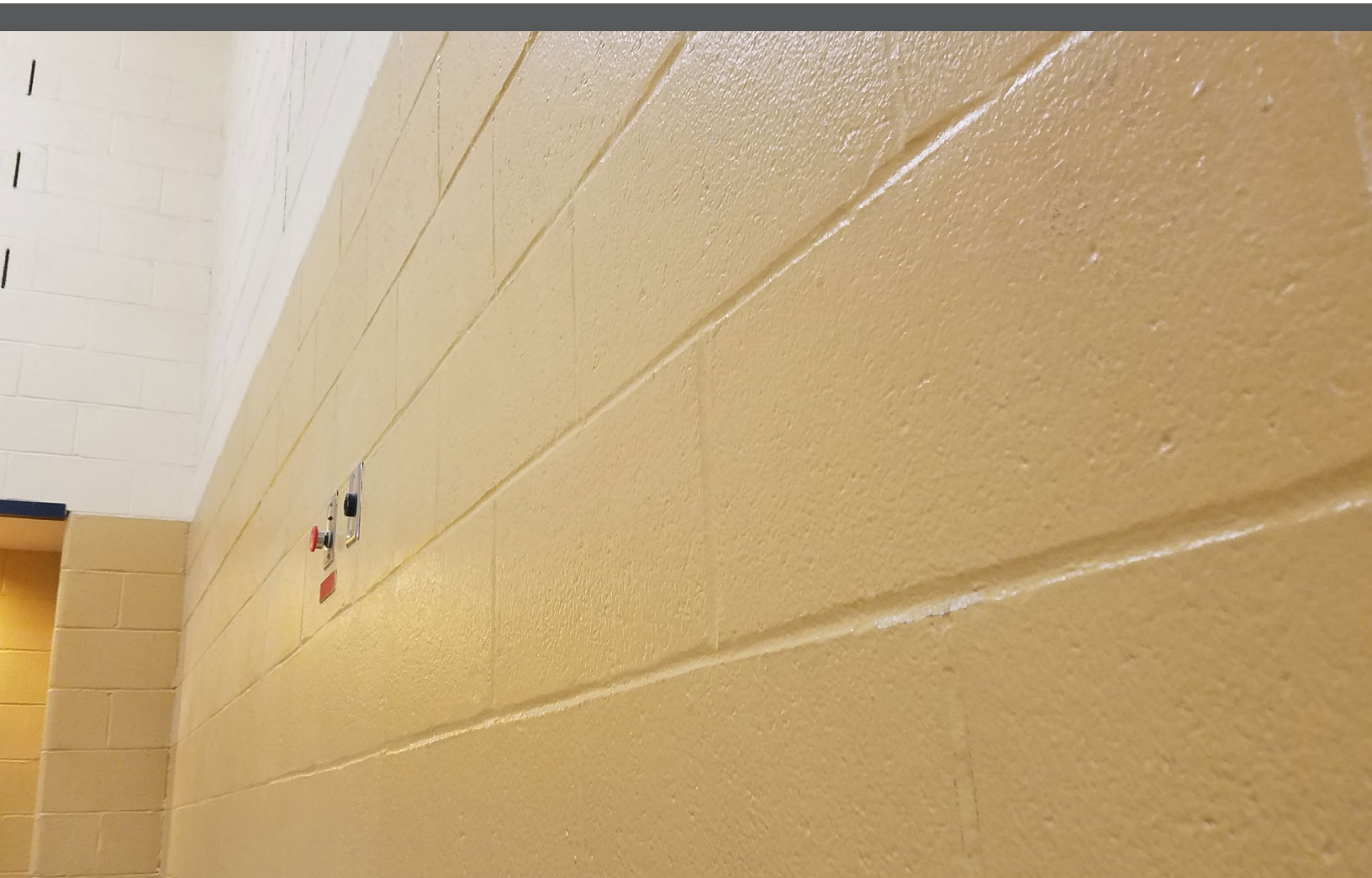
There is not a one-size-fits-all solution for the protection of walls, every project is different. Projects differ so much that to provide an economical solution, the coating or system needs to be adjusted for the application. Sanitile systems are designed to match need with performance, economics, and expectations.

The original Sanitile coatings, introduced 60 years ago, produce a hard, glazed, tile-like finish that is both tough and functional. Sanitile systems create a whole new concept of protecting walls and ceilings against destructive elements. The unique formulations, coupled with a systems approach to solving recurring paint failures, result in coating systems that are not only aesthetically pleasing but functional and economical as well.

Sanitile coatings systems transform ordinary walls and ceilings into “tile-like” surfaces. With applications

in food and beverage, pharmaceutical to institutional, commercial, architectural, industrial, and even nuclear markets, it is one of the most highly regarded product lines for cost effective performance. Sanitile systems are capable of transforming ordinary walls and ceilings of concrete, brick, masonry and drywall into attractive and functional surfaces.

The latest advancements in technology has resulted in the expansion of product and system offerings. These new offerings can handle nearly any application with improved functionality, application friendliness, and aesthetics. The new Sanitile systems are even easier to apply, clean and sanitize. They continue to demonstrate their well-known characteristics of high performance and lasting appearance.



Protection for Drywall

The choice of a proper coating system for drywall or plaster will be able to handle aggressive exposures, as well as perform to expectations to ensure optimum service life.

SANITILE SYSTEM		GLOSS	HARDNESS IMPACT RESISTANCE	SCRUB RESISTANCE	STAIN OR CHEMICAL RESISTANCE	YELLOWING RESISTANCE
SEALER	FINISH					
120	155	Satin	Fair	Fair	Fair	Excellent
120	255	Gloss or semi-gloss	Good	Good	Good	Very good
120	555 VOC	High	Very good	Very good	Very good	Good

Sanitile 120

A multi-purpose primer/sealer for drywall, concrete board, wood fiber board, or other "porous" flat-panel type materials of construction. Accepts two-component or solvent-based finishes.

Sanitile 155

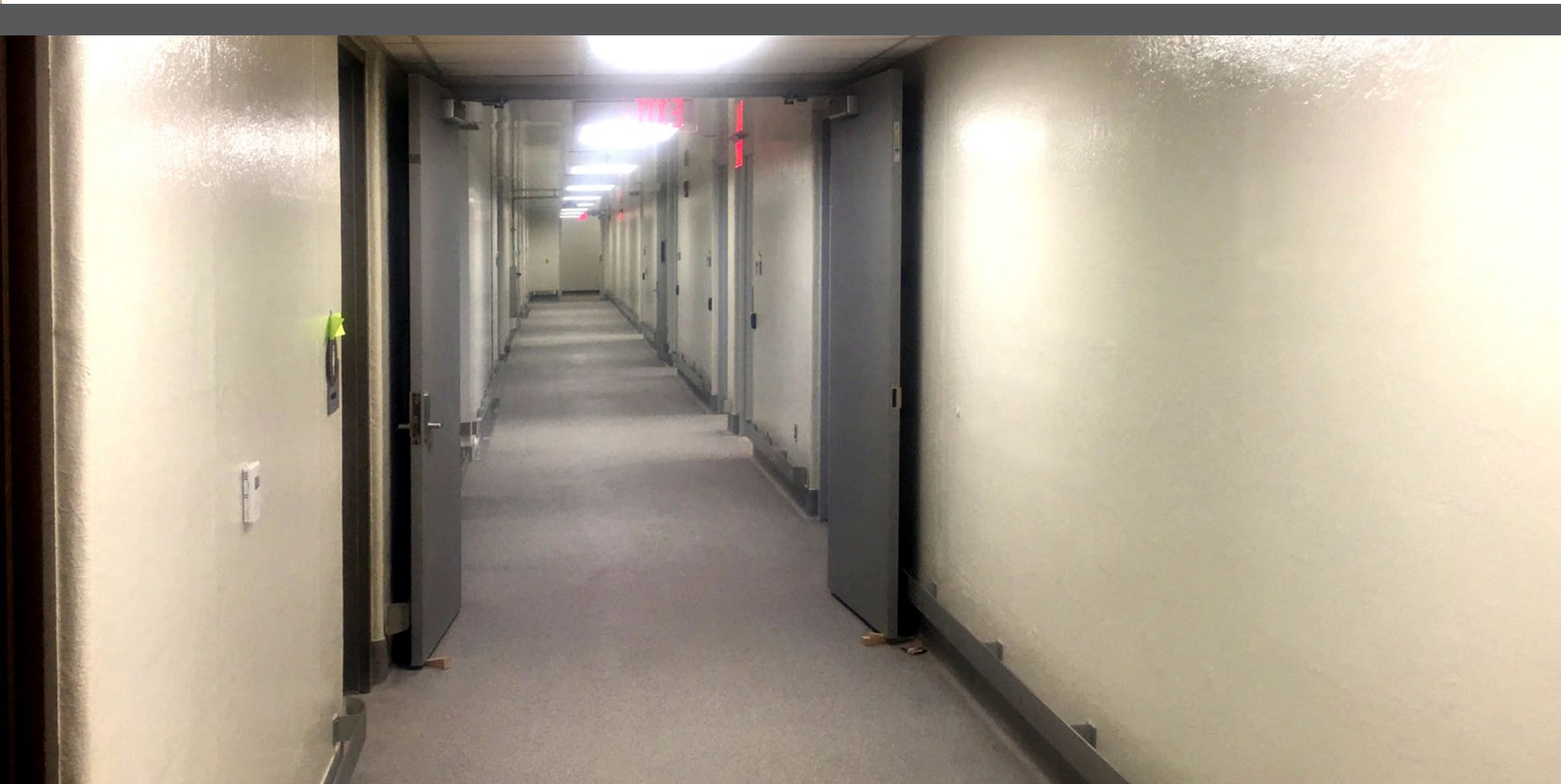
A heavy-duty single component, satin gloss, water-based, acrylic finish with excellent application properties and color stability.

Sanitile 255

A water based, heavy-duty acrylic-epoxy finish. A very versatile product for moderate to more aggressive exposures. It is the most yellowing-resistant epoxy.

Sanitile 555 VOC

A high performance, water based epoxy finish with excellent overall product characteristics. It is highly versatile in light, moderate, and heavy-duty service.



Systems for Dry Areas

For environments that require infrequent cleaning and will suffer minor abuse or abrasion, a light to moderate treatment system will work best. Such systems will be evident in everyday interior environments.

SANITILE SYSTEM		GLOSS	HARDNESS IMPACT RESISTANCE	SCRUB RESISTANCE	STAIN OR CHEMICAL RESISTANCE	YELLOWING RESISTANCE
SEALER	FINISH					
100	155	Satin	Fair	Fair	Fair	Excellent
100	255	Gloss or semi-gloss	Good	Good	Good	Very good
100	555 VOC	High	Very good	Very good	Very good	Good
100	655	High	Excellent	Excellent	Excellent	Good
100	855	High	Excellent	Excellent	Very good	Excellent

Sanitile 100

An economical approach to filling and sealing concrete block and masonry unites in preparation for various finishes. Superior performance over PVA-based sealers.

Sanitile 155

A heavy-duty single component, satin gloss, water-based, acrylic finish with excellent application properties and color stability.

Sanitile 255

A water based, heavy-duty acrylic-epoxy finish. A very versatile product for moderate to more aggressive exposures. It is the most yellowing-resistant epoxy.

Sanitile 555

A high performance, water based epoxy finish, which is more durable and chemically resistant than acrylic-epoxy blends.

Sanitile 655

A high-solids, solvent based epoxy with excellent overall chemical resistance and physical properties. Used for more aggressive applications.

Sanitile 855

An ultra-durable, modified polyester urethane. It has excellent chemical resistance and durability, along with outstanding color and gloss retention.



Systems for Processing Areas

Utilize a moderate to heavy-duty system for environments where both service areas and cleaning tactics are more aggressive. This can include power washing, spill potential and mild physical abuse. Most importantly, these systems protect against chemical fuming exposures and damages.

SANITILE SYSTEM		GLOSS	HARDNESS IMPACT RESISTANCE	SCRUB RESISTANCE	STAIN OR CHEMICAL RESISTANCE	YELLOWING RESISTANCE
SEALER	FINISH					
755	755	High	Excellent	Excellent	Excellent	Fair
500	555 VOC	High	Very good	Very good	Very good	Good
500	855	High	Excellent	Excellent	Very good	Excellent
600 Series	655	High	Excellent	Excellent	Excellent	Good
600 Series	855	High	Excellent	Excellent	Very good	Excellent

Sanitile 755

An ultra-durable, solvent-free, versatile epoxy with excellent overall chemical resistance and applicability. No VOC and low odor are features desirable for in-service operations.

Sanitile 500

A high performance water-based, two component epoxy filler/sealer for concrete block and other masonry substrates that is used to fill and seal porous surfaces.

Sanitile 555 VOC

A high performance, water based epoxy finish with excellent overall product characteristics. Highly versatile in light, moderate, and heavy-duty service.

Sanitile 600 Series

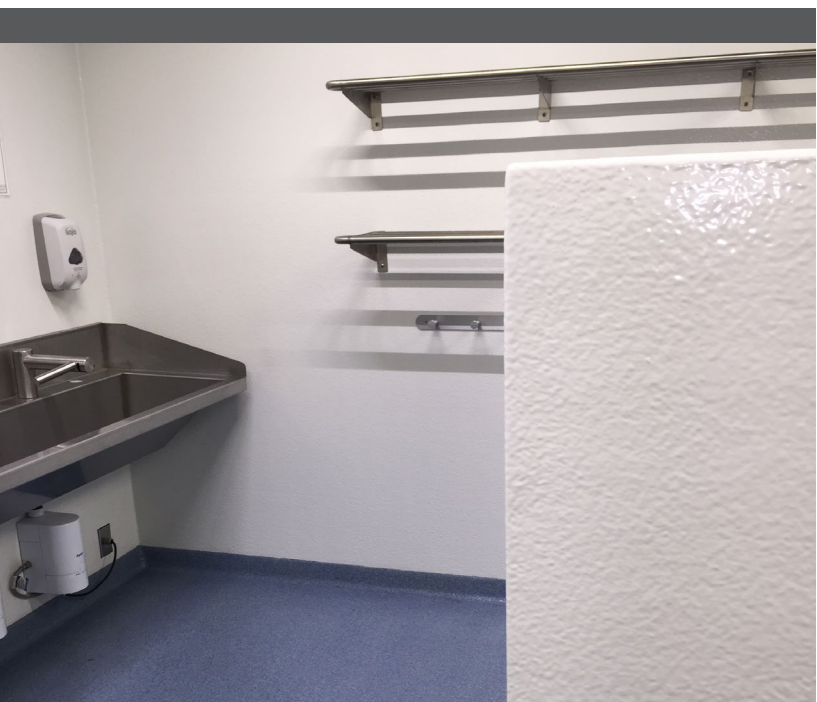
A high performance high solids, two-component, solvent-based epoxy filler/sealer for concrete or other masonry surfaces that is used to fill and seal porous surfaces. This is available in regular and ultra-high build trowel grade (tg).

Sanitile 655

A high-solids, solvent based epoxy with excellent overall chemical resistance and physical properties. Used for more aggressive applications.

Sanitile 855

An ultra-durable, modified polyester urethane. Features excellent chemical resistance and durability, along with outstanding color and gloss retention.



Performance in Extreme Conditions

Severe exposures demand high performance. Performance is dictated by a solid foundational surfacing material followed by a protective barrier for chemical resistance and/or physical abuse. A final decorative finish can be added for custom color needs or additional project requirements and maintenance.

SANITILE SYSTEM			GLOSS	HARDNESS IMPACT RESISTANCE	SCRUB RESISTANCE	STAIN OR CHEMICAL RESISTANCE	YELLOWING RESISTANCE
SEALER	REINFORCED MIDCOAT	FINISH					
600	755/Fiberglass Mat/755	Optional Finish**	High	Excellent	Excellent	Excellent	--
600*	Sanitile 755 FR	Optional Finish**	High	Excellent	Excellent	Excellent	67%

* Optional sealer

** Optional Finish Coats: Sanitile 755, Sanitile 855, Sanitile 555 VOC, Carbothane 134 WB. Consult Carboline technical service for topcoat recommendation.



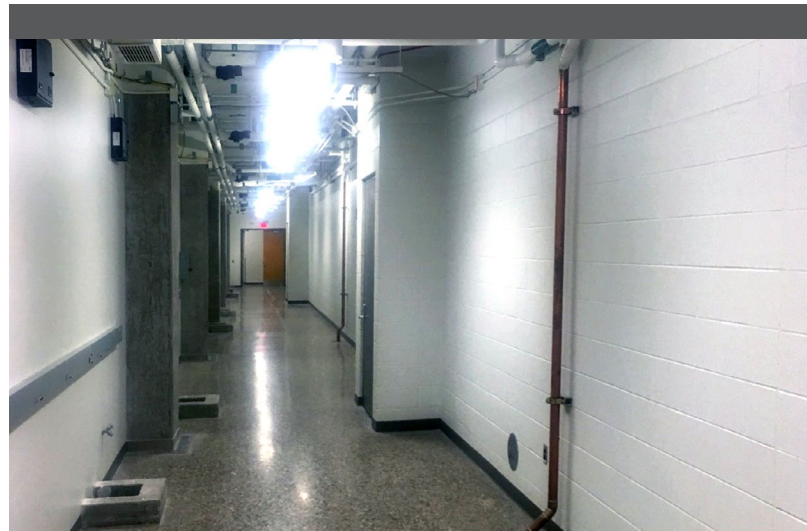
Protective Barriers: Epoxy Cladding

Sanitile 755

An ultra-durable, solvent-free, versatile epoxy with excellent overall chemical resistance and applicability. No VOC and low odor are features desirable for in-service operations.

Sanitile 755 FR

A fiber reinforced, wall and ceiling coating designed for maximum protection and minimum maintenance. Ultra low VOC, labor saving, one coat system. Self priming with excellent chemical, abrasion and impact resistance. Passed fungal resistance testing - ASTM G21 & ASTM D5590.



Decorative Low-Odor Finishes

Sanitile 555 VOC

A high performance, water based epoxy finish with excellent overall product characteristics. Highly versatile in light, moderate, and heavy-duty service.

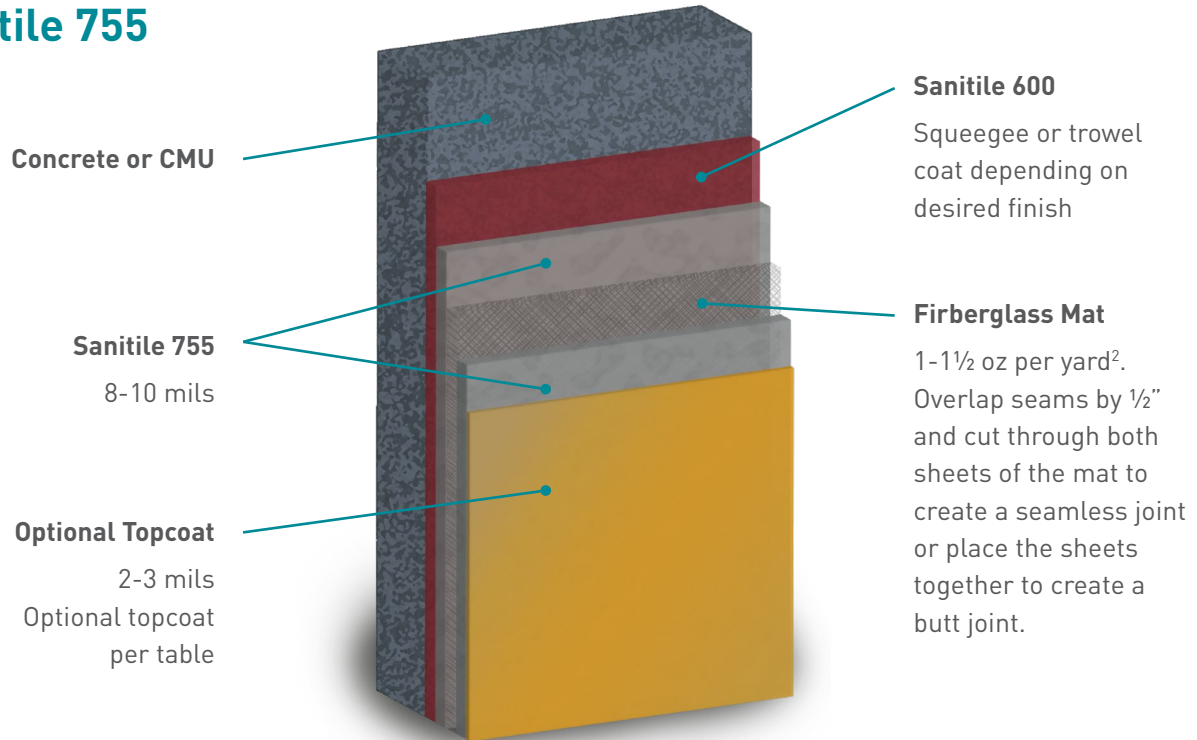
Carbothane 134 WB

A water-borne aliphatic acrylic polyurethane; low VOC content with excellent weatherability. Excellent flow characteristics allow application by spray or roller. Flexible, impact and abrasion resistant film.

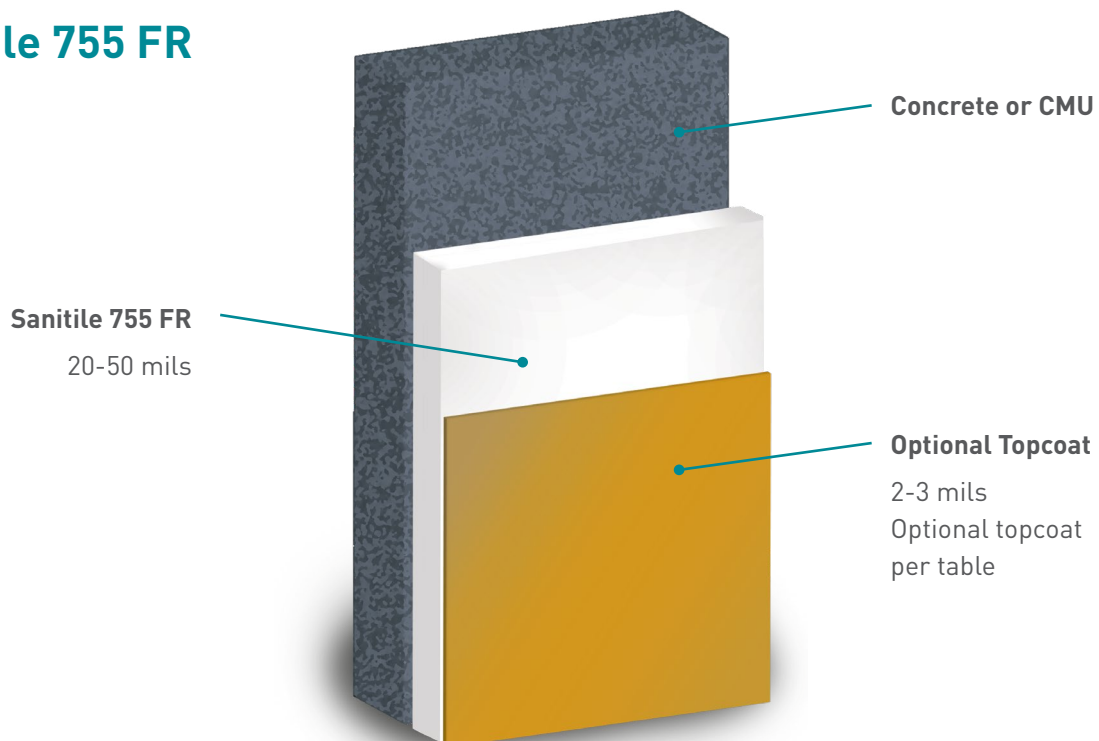
Sanitile Reinforced Wall System

Below is the detail of the wall system that is designed for heavy duty to extreme exposures.

Sanitile 755



Sanitile 755 FR



GLOBAL COATINGS LEADERS™

RIGHT PEOPLE • RIGHT PRODUCTS • RIGHT LOCATIONS



GLOBAL MANUFACTURING PLANTS

CARBOLINE COMPANY
GLOBAL HEADQUARTERS
2150 SCHUETZ ROAD
ST. LOUIS, MO 63146 USA
PH: +1-314-644-1000
WWW.CARBOLINE.COM

ARGENTINA - BUENOS AIRES
EINSTEIN 1095
PARQUE INDUSTRIAL OKS
GARÍN PROV. DE BUENOS
AIRES, ARGENTINA
PHONE: 54-3327-44-2222
FAX: 54-3327-44-2223

AUSTRALIA - BRISBANE
7 PRODUCTION AVE
ERNEST JUNCTION
QUEENSLAND 4214
AUSTRALIA
PHONE: +61 7 3287 0222
FAX: +61 7 5594 9093

**BRAZIL - JARDIM CAMPO
GRANDE**
CNPJ: 58.681.867/0001-30
RODOVIA VITO ARDITO, 6401
KM 118.5, JARDIM CAMPO
GRANDE
12282-535 CACAPAVA SP
BRAZIL

CANADA - ONTARIO
420 TAPSCOTT ROAD UNIT 5
SCARBOROUGH, ONTARIO
M1B 1Y4, CANADA
PHONE: 416-292-2361
FAX: 416-298-5887

CHINA - DALIAN
HOU SHI CUN, DA WEI JIA
ZHEN
JIN ZHOU DISTRICT
DALIAN, CHINA 116110
PHONE: 86-411-8789-8441,
8442, 8443, 8444
FAX: 86-411-8789-8445

INDIA - CHENNAI
NO. 356 & 357 SIDCO
INDUSTRIAL ESTATE
AMBATTUR,
CHENNAI 600 098
INDIA
PHONE: 91-22-28500321
FAX: 91-22-28500323

INDIA - MAHARASHTRA
GUT NO. 300
VILLAGE MUSSARNE
BHIWANDI WADA ROAD,
TALUKA WADA,
DISTRICT PALGHAR,
MAHARASHTRA
INDIA

ITALY - ALGHERO
VIA MILANO 150
20093 COLOGNO MONZESE
(MI), ITALY
PHONE: 3902-25 3751
FAX: 3902-25 37560

JAPAN - AMAGASAKI
TERAMOTO UNYU SOKO CO.,
LTD 17
MINAMIHATSUSHIMA-CHO,
AMAGASAKI, 660-0833 JAPAN
PHONE: 81-3-3643-4501
FAX: 81-3-3643-2951

MALAYSIA - KUALA LUMPUR
LOT 37631-37632 JALAN 6/37A
TAMAN BUKIT MALURI
INDUSTRIAL AREA
KEPONG 52100,
KUALA LUMPUR, MALAYSIA
PHONE: 603-6277-9575
FAX: 603-6277-4645

NEW ZEALAND - TAURANGA
91-111 OROPI ROAD
GREERTON
TAURANGA
NEW ZEALAND
PHONE: +64 7 5411 221
FAX: +64 7 541 1310

NORWAY - LIERSTRANDA
P.O. BOX 593
3412 LIERSTRANDA, NORWAY
PHONE: 47-32-857300
FAX: 47-32-857301

PUERTO RICO - SAN LORENZO
URB. APONTE #5
SAN LORENZO, PUERTO RICO
00754
PHONE: 787-736-4221
FAX: 787-736-53133

SAUDI ARABIA - DAMMAM
1ST INDUSTRY CITY, 28TH
STREET
P.O. BOX 1050
DAMMAM 31431,
KINGDOM OF SAUDI ARABIA
PHONE: +966 3 847 3044
FAX: +966 3 847 3689

SPAIN - VALLIRANA
PERLITA Y VERMICULITA SL
VAT NO. ESB58598418
POLIGONO INDUSTRIAL CAN
PRUNERA S/N
VALLIRANA 08759
SPAIN

**SOUTH AFRICA -
JOHANNESBURG**
8 CRESSET ROAD
MIDRAND INDUSTRIAL PARK
JOHANNESBURG,
SOUTH AFRICA
PHONE: 27-11-2545500
FAX: 27-11-310-2872

SOUTH KOREA - BUSAN
43-1, JINYOUNG-RI
JINYOUNG-EUB
KIMHAE-CITY, 621-800
KYOUNGSANGNAMDO, KOREA
PHONE: 82-55-343-6441/5
FAX: 82-55-343-6414

TURKEY - BURSA
ALI OSMAN SONMES CAD.
NO.4
BURSA, DOSAB 16369 TURKEY
PHONE: 90-224-261-0537

UAE - DUBAI
P.O. BOX 3034
DUBAI, UAE
PHONE: 971-4-347-0460
FAX: 971-4-347-0242

USA - DAYTON
95 AIRPARK VISTA BLVD.
DAYTON, NV 89403
PHONE: 775-246-0760
FAX: 775-246-0763

USA - GREEN BAY
614 ELIZABETH ST
GREEN BAY, WI 54302
PHONE: 920-437-6561
FAX: 920-437-8546

USA - LAKE CHARLES
900 OPELOUSAS STREET
LAKE CHARLES, LA 70601
PHONE: 337-433-0605
FAX: 337-439-0380

USA - LOUISA
321 DUKE ST.
LOUISA VA 23093
PHONE: 540-967-5119
FAX: 540-967-5120

VENEZUELA - VALENCIA
URBANIZACION INDUSTRIAL
"EL TIGRE"
AVENIDA PRINCIPAL
GALPÓN "H"
VALENCIA EDO. CARABOBO
VENEZUELA
PHONE: 58-245-4000400
FAX: 58-245-5642011

VIETNAM - TINH BINH DUONG
LO D, 4R-CN,
KHU CONG NGHIEP MY PHUOC 3
THI XA BEN CAT
TINH BINH DUONG
VIETNAM

